

# ELI Weekly

The Weekly Newsletter of the English Language Institute

Volume 100, Issue 9

July 7, 2006

## Volunteer Day

This weekend, the Cultural Immersion Program has planned something to help you practice English, have fun, and get to know new people – all while helping others! See the Activities Board for more information.

### St. Francis Homeless Shelter

9:30 am – 2:00 pm

The homeless shelter is a place where people who have no homes can come to eat meals. If you volunteer at the shelter, you could help prepare and serve meals, or you might set up or clean up the dining room. Working here is a great opportunity to meet people and practice English.

### Nursing Home

1:45 - 4:00 pm

Brighten up an elderly person's day at the nursing home during their weekly Bingo game. Many residents don't have their families nearby and are thrilled to chat with new people.

### Jungle Friends

9:15 am – 1:00 pm

At Jungle Friends, you can help the seventy monkeys that live there by helping to make or maintain their habitats. This is a fun activity, especially if you are an animal lover. Plus, after your hard work they will give everyone a tour and provide lunch.



### Alachua County Humane Society

9:45 am - 1:00 pm

The Alachua County Humane Society (ACHS) provides shelter, medical care, and adoption services to abandoned, lost, and misplaced pets – mostly dogs and cats. We will be helping the ACHS by taking dogs for walks, washing dogs, and cleaning. You will get a chance to talk with other volunteers and staff, and help care for the cute and cuddly pets. Wear clothes that can get dirty, and NO flip flops or sandals.

### Alachua County Humane Society

12:00 – 3:00 pm

Come support the Alachua County Humane Society by raising money through an old fashioned carwash. We will get cars to stop by from the street and wash them for donations. Carwashes are a common form of fundraising in the U.S., and always a lot of fun. Wear clothes that can get wet and soapy. This will be a great chance to meet lots of people and practice your English!

## Student IDs / Gatorlink

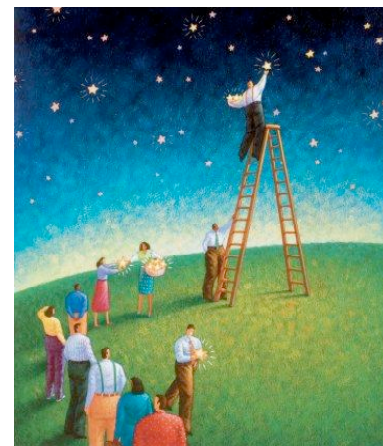
This Friday, **July 7th**, we will walk you



over to purchase your UF Gator ID and get your UF computer accounts. You will need to bring \$15 for the ID, your ELI Tuition Receipt with your ID number on it, and a photo ID, such as your passport or a driver's license. We will meet at the Norman Hall Garage at **12:35 pm** and walk over together.

## TRiP to Daytona Beach

Next Saturday, **July 15th**, we will be going to Daytona Beach! This is a van trip, so we need to buy tickets at the TRiP office in the Reitz Union ahead of time. Meet in Norman Hall Garage at **12:35 pm** on Friday, **July 7th** (the same time as the trip to get IDs). Tickets cost \$25.



## Inside this issue:

Volunteer Day | Manners and Culture | Countries Represented

## Manners and Culture

*Q: Which parts of Gainesville are unsafe at night?*

A: Well, anywhere can be unsafe if you don't exercise common sense. It's best to walk with friends at night and stay in well-lit areas. Being alone in dark places is not the best idea. Downtown and parts of Northeast and Southeast Gainesville do have somewhat higher crime rates than the rest of town, but they're not necessarily more unsafe than other areas if you exercise reasonable caution. If you find yourself in a dangerous situation, you can call the police on any phone by dialing 911.



*Thanks for your input! If you have a question about U.S. manners and culture, please email our ELI Weekly editor, Nora Spencer, at [noraspencer@gmail.com](mailto:noraspencer@gmail.com), or put questions in her mailbox (marked **Spencer** in the ELI Main Office).*

## Countries Represented

Welcome to all the new students studying in the Summer B semester, and all returning students from midterm break! Currently, the ELI has students from the following countries:

Benin	Honduras	Spain
Bolivia	Iran	Taiwan
Brazil	Japan	Thailand
China	Korea	USA
Ecuador	Saudi Arabia	Venezuela
Haiti		

## Notes from the Office

Tuition is due on Thursday, **July 6th**, before 2:30pm. Please try to pay your tuition before the deadline. For any questions you have about your tuition, see Sonja Pealer in the ELI Main Office, 315 Norman.

Proof of immunizations must be received by Friday, **July 21**, or you will not be allowed to continue to attend classes. No exceptions.

## Birthdays

Belated birthday wishes to:

June 29: Valentina Komaniecka

Happy upcoming birthday wishes to:

July 6: Awatef Almallak

July 8: Jafar Al Hejji

July 8: Lili Gai

July 11: Abdulkarim Alobayyed

July 11: Abdulrahman Mandili

July 11: Antonio Ramos Russian



English Language Institute  
PO Box 117051  
315 Norman Hall  
Gainesville, FL 32611-7051, USA  
Phone: (352) 392-2070  
Fax: (352) 392-3744  
Email: [StudyEnglish@eli.ufl.edu](mailto:StudyEnglish@eli.ufl.edu)  
Webpage: [www.eli.ufl.edu](http://www.eli.ufl.edu)